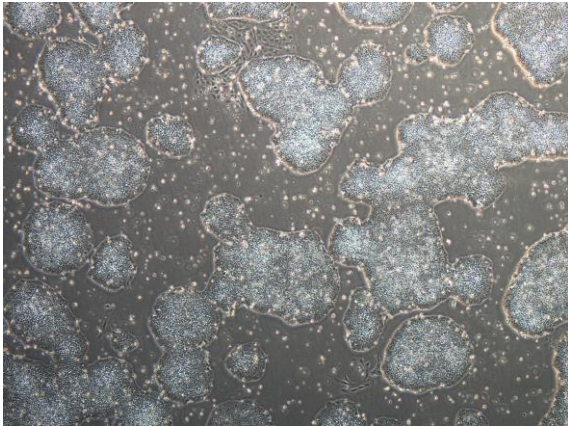
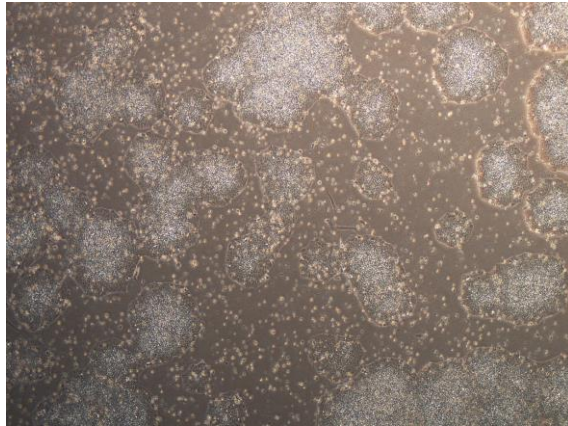


【 CiRA-j-1013 】 Morphology of iPSC colonies

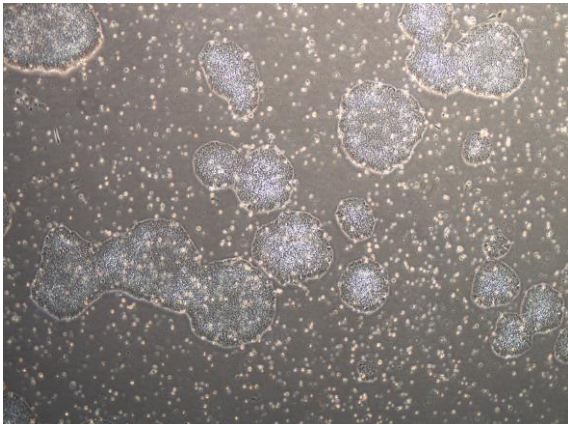
CiRA-j-1013-A: passage-2



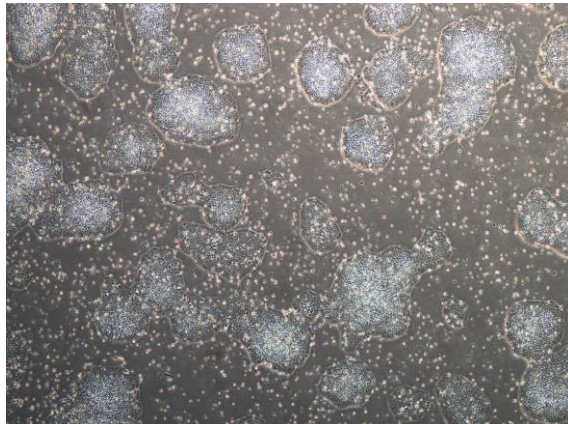
CiRA-j-1013-B: passage-2



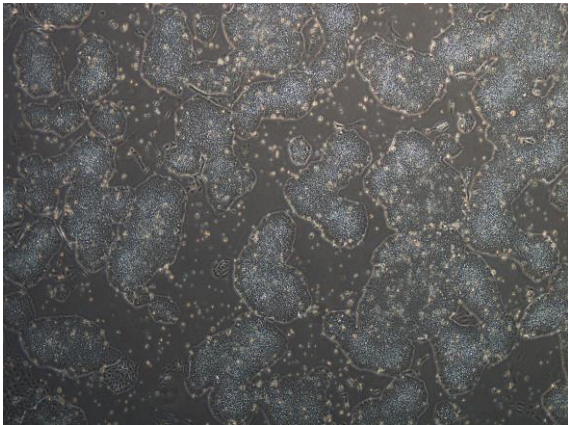
CiRA-j-1013-C: passage-2



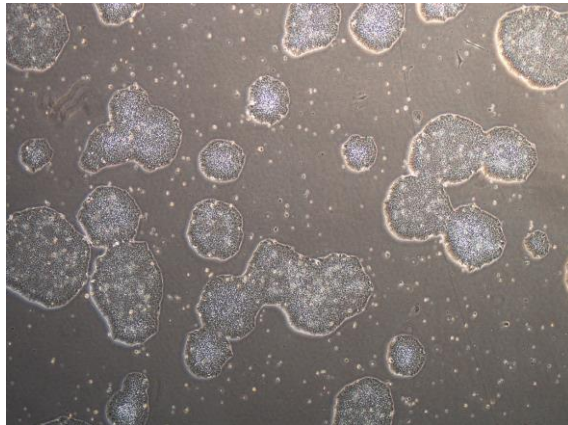
CiRA-j-1013-D: passage-2



CiRA-j-1013-E: passage-2



CiRA-j-1013-F: passage-2



(All images were captured at 4x magnification)